

SFB TYPE

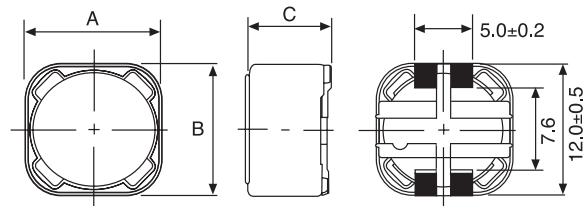
SMD POWER INDUCTOR



FEATURE

- The rated current indicates the value of current when the inductance is 10% lower than its initial value at DC superposition or DC current when $\Delta t = 45^{\circ}\text{C}$, whichever is lower
- Tolerance of inductance
 $1.2\mu\text{H}\sim 7.6\mu\text{H}(100\text{KHz})$ $10\mu\text{H}\sim 100\mu\text{H}(1\text{KHz})$

SHAPES & DIMENSION



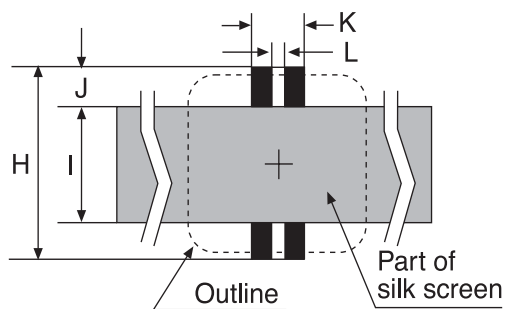
Dimension in m/m

APPLICATION

- DC/DC converter
- Power supplies for:
 Portable communication equipment
- Camcorder
- LCD TV
- Notebook computer

TYPE	A	B	C
SFB 1205	12.0±0.5	12.0±0.5	6.0 Max
SFB 1207	12.0±0.5	12.0±0.5	8.0 Max

RECOMMENDED LAND PATTERNS FOR SMD



Please coat with silk screen between the two terminals.
 Recommended thickness of metal mask: 0.2t

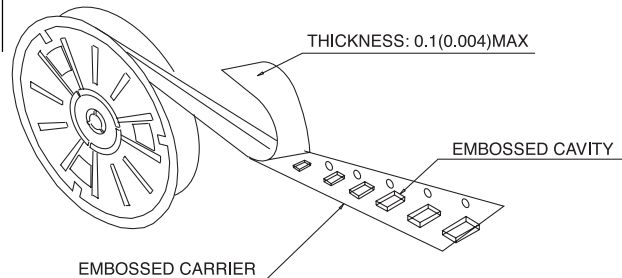
Dimension in m/m

TYPE	H	I	J	K	L
SFB 1205	12.8	7.0	2.9	5.4	1.0
SFB 1207	12.8	7.0	2.9	5.4	1.0

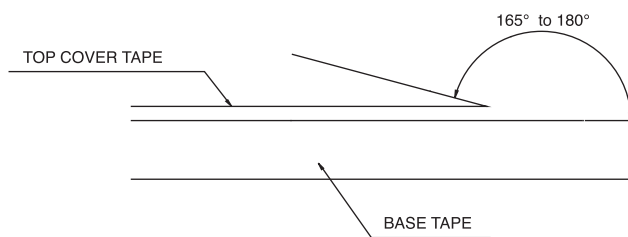
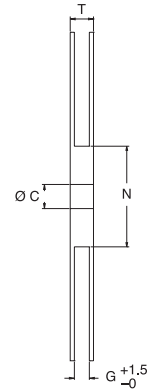
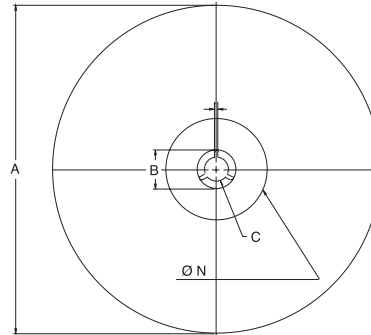
SFB TYPE

SMD POWER INDUCTOR

PACKAGING FOR SMC



CARRIER TAPE REELS



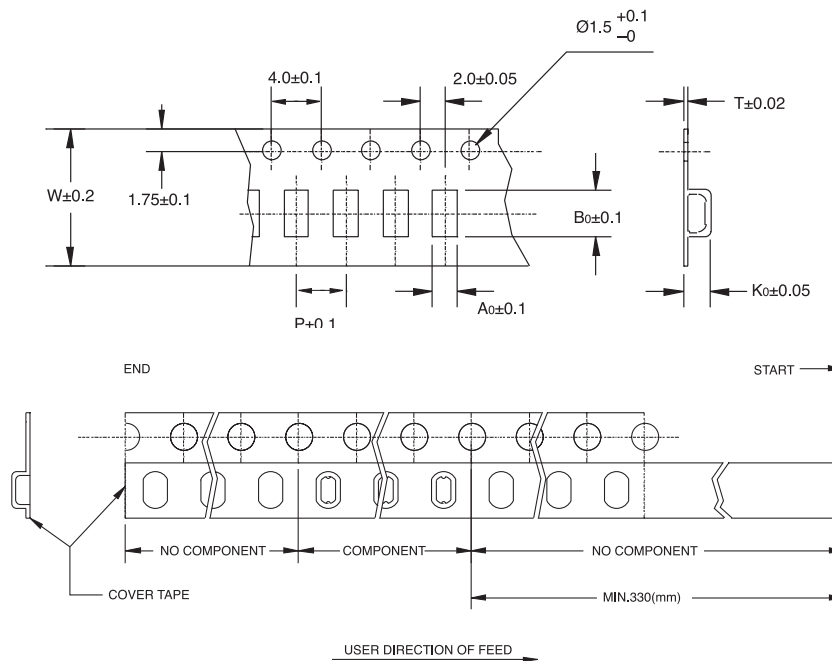
The force for tearing off cover tape is 10 to 60 grams in the arrow direction.

MATERIAL: PAPER/PLASTIC

Dimension in mm

TYPE	A	B	C	G	N	T	MATERIAL
8mm	178	21.0±0.8	13.0±0.2	8.4	55	12.4	PAPER
12mm	178	21.0±0.8	13.0±0.2	12.4	55	16.4	PAPER
16mm	178	21.0±0.8	13.0±0.2	16.4	55	20.4	PAPER
24mm	178	21.0±0.8	13.0±0.2	24.4	100	28.4	PAPER
12mm	330	21.0±0.8	13.0±0.2	12.4	100	16.4	PLASTIC
16mm	330	21.0±0.8	13.0±0.2	16.4	100	20.4	PLASTIC
24mm	330	21.0±0.8	13.0±0.2	24.4	100	28.4	PLASTIC
24mm	330	21.0±0.8	13.0±0.2	24.4	75	28.4	PAPER
32mm	330	21.0±0.8	13.0±0.2	32.4	75	36.4	PAPER

TAPE DIMENSION/PACKAGING



TYPE	A0	B0	K0	W	P	T	CHIPS/REEL	Dimension in mm
SCB 0603	6.20	6.80	3.80	16.0	12.0	0.40	1000	
SCB 0703	7.60	7.60	3.70	16.0	12.0	0.30	500	
SCB 0704	7.60	7.60	5.40	16.0	12.0	0.40	500	
SCB 1204	12.60	12.60	5.20	24.0	16.0	0.40	500	
SCB 1205	12.60	12.60	5.80	24.0	16.0	0.40	500	
SCB 1207	12.60	12.60	8.00	24.0	16.0	0.40	500	
SFB 1205	12.60	12.60	5.80	24.0	16.0	0.40	500	
SFB 1207	12.60	12.60	8.00	24.0	16.0	0.40	500	