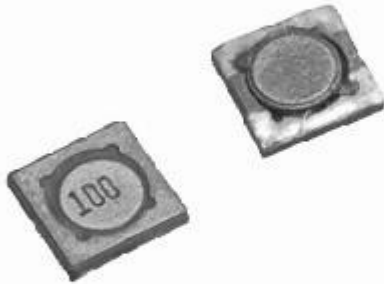
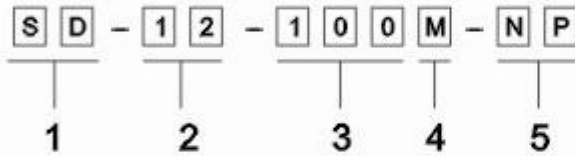


SMD POWER INDUCTORS SD12 TYPE



PRODUCT IDENTIFICATION



1.PRODUCT SYMBOL

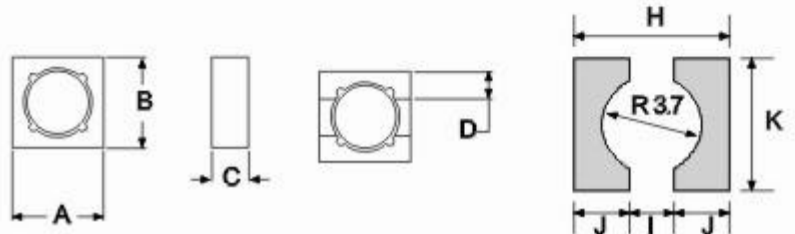
2.BODY HEIGHT : mm

3.INDUCTANCE : μH

4.TOLERANCE : K \pm 10% , L \pm 15% , M \pm 20%

5.Meet ROHS Regulations of Prohibited 6 Poisonous Materials

SHAPES & DIMENSION FOR SD12 SERIES (mm)



FEATURE

- Available in magnetically shielded.
- Low DC resistance.
- Suitable for large currents.
- Ideal for a variety of DC-DC converter inductor applications.
- Available on tape and reel for auto surface mounting

PART NO.	A	B	C	D	H	I	J	K
SD 12	5.2 ^{±0}	5.2 ^{±0}	1.2 ^{±0}	1.4	5.8	1.6	2.1	5.8

ELECTRICAL SPECIFICATION

Part NO.	L (μH)	RDC(OHM) Max.		IDC(A)Max.	
		SD 12		SD 12	
1R5	1.5	0.085		2.08	
4R7	4.7	0.20		1.29	
5R6	5.6	0.25		1.08	
6R2	6.2	0.25		1.00	
6R8	6.8	0.28		0.931	
8R2	8.2	0.35		0.818	
100	10	0.51		0.69	
120	12	0.70		0.57	
150	15	0.51		0.54	
220	22	0.70		0.50	
470	47	1.37		0.39	

Operating Temperature : -30 $^{\circ}\text{C}$ ~ +85 $^{\circ}\text{C}$

Test Freq. : 100KHz/1V

Inductance drop \leq 35% Typ. At IDC